



For Immediate Release
July 20, 2018

Contact: Mathew Barewicz, (802) 828-4153
Mathew.Barewicz@vermont.gov

Vermont Unemployment Rate Holds at 2.8 percent in June

The Vermont Department of Labor announced today that the seasonally-adjusted statewide unemployment rate for June was 2.8 percent. This reflects no change from the revised May rate. The national rate in June was 4.0 percent. As of the prior month’s preliminary data, the Burlington-South Burlington Metropolitan NECTA was tied for the fourth lowest unemployment rate in the country for all metropolitan areas. Overall, Vermont’s unemployment rate was tied for the fifth lowest in the country for the same time period.

Commissioner’s Message

“The labor force participation rate in Vermont rose again in June, marking the sixth consecutive month of a rising rate of Vermonters active in the labor market. With a 67.6% labor force participation rate, Vermont is over four percentage points higher than the US estimate. Despite this increase, Vermont firms are still actively recruiting and report numerous openings across a wide range of occupations. The Department can be a resource for employers looking for talented workers and individuals interested in work. There are many opportunities to work together to help match up qualified candidates with good Vermont employers. It is not too late to learn about Summer Employment Opportunities through the Department. Contact any one of the Department’s 12 local offices to learn more about the services we offer,” said Labor Commissioner Lindsay Kurrle.

Chart 1. Unemployment Rate, seasonally adjusted

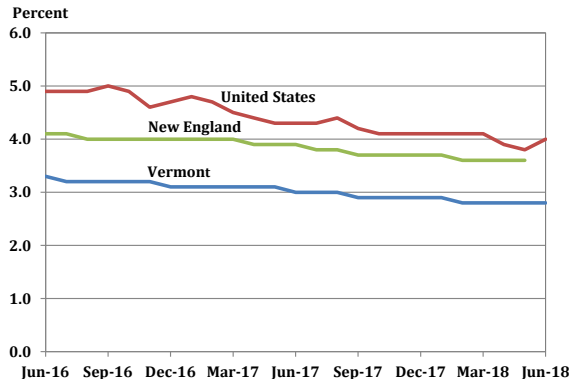
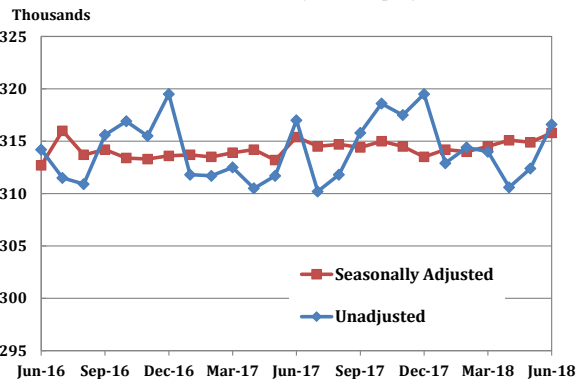


Chart 2. Vermont Nonfarm Payroll Employment



State of Vermont Overview

The Vermont seasonally-adjusted unemployment rate held steady in June at a level of 2.8 percent. The comparable United States rate in June was 4.0 percent which was an increase of two-tenths of one percentage point from the revised May estimate. The seasonally-adjusted Vermont data for June show the Vermont civilian labor force increased by 426 from the prior month's revised estimate. The number of employed persons increased by 327 and the number of unemployed persons increased by 99. None of these changes were statistically significant in the seasonally-adjusted series.

The June unemployment rates for Vermont's 17 labor market areas ranged from 2.1 percent in White River Junction to 4.3 percent in Derby (note: local labor market area unemployment rates are not seasonally-adjusted). For comparison, the June unadjusted unemployment rate for Vermont was 3.0 percent which reflects an increase of four-tenths of one percentage point from the revised unadjusted May level and a decrease of one-tenth of one percentage point from a year ago.

Analysis of Job Changes by Industry

Not-Seasonally-Adjusted

The preliminary 'not-seasonally-adjusted' jobs estimates for June show an increase of 4,200 jobs when compared to the revised May numbers. There was no change between the preliminary and the revised May estimates due to the inclusion of more data. The monthly increase seen in the June numbers was primarily attributable to seasonal hiring in leisure and hospitality. The broader economic trends can be detected by focusing on the over-the-year changes in this data series. As detailed in the preliminary 'not-seasonally-adjusted' June data, Total Private industries have decreased by 300 jobs (-0.1 percent) and Government (including public education) employment has decreased by 100 jobs (-0.2 percent) in the past year.

Seasonally-Adjusted

The seasonally-adjusted data for June reports an increase of 900 jobs from the revised May data. As with the 'not-seasonally-adjusted' data, this over-the-month change is from the revised May numbers which experienced an increase of 300 jobs from the preliminary estimates. The seasonally-adjusted over-the-month changes in June varied at the sector level. Those with a notable increase include: State Government (+400 jobs or +2.2%) and Professional & Technical Services (+300 jobs or +2.1%). Sectors with a notable decrease include: Private Educational Services (-200 jobs or -1.5%) and Retail Trade (-300 jobs or -0.8%).

The Unemployment and Jobs Report for July is scheduled to be released on Friday, August 17, 2018 at 10:00 a.m.

Table 1. Vermont Labor Force Estimates, seasonally adjusted

	June 2018	May 2018	June 2017	Change From:	
				May 2018	June 2017
Civilian Labor Force	349,287	348,861	344,631	426	4,656
Employed	339,514	339,187	334,172	327	5,342
Unemployed	9,773	9,674	10,459	99	-686
Unemployment Rate (%)	2.8	2.8	3.0	0.0	-0.2

Vermont's labor force, employment and unemployment statistics are produced from a combination of a Statewide survey of households and statistical modeling. The data are produced by the Local Area Unemployment Statistics Program (LAUS), a cooperative program with the U.S. Department of Labor, Bureau of Labor Statistics (www.bls.gov/lau) and the Vermont Department of Labor (www.vtlni.info/labforce).

Table 2. Vermont Labor Market Areas, Labor Force Estimates
not seasonally adjusted

Labor Market Area ¹	Civilian Labor Force	June, 2018		Unemployment Rate ² (%)		
		Employed	Unemployed	Jun-18	May-18	Jun-17
Vermont Total	353,058	342,608	10,450	3.0	2.6	3.1
Barre-Montpelier	26,764	26,033	731	2.7	2.4	2.9
Bennington	11,465	11,047	418	3.6	3.2	4.2
Brattleboro	22,639	21,916	723	3.2	3.2	3.2
Burlington-South Burlington	127,835	124,531	3,304	2.6	2.1	2.6
Derby	13,057	12,502	555	4.3	4.1	4.5
Highgate	10,362	10,065	297	2.9	2.5	3.2
Manchester	11,718	11,318	400	3.4	3.9	3.6
Middlebury	19,334	18,773	561	2.9	2.5	3.0
Morristown-Waterbury	18,567	17,961	606	3.3	3.3	3.6
Newbury	2,899	2,822	77	2.7	2.7	3.2
Northfield-Waitsfield	6,859	6,597	262	3.8	2.8	3.8
Randolph	7,554	7,305	249	3.3	2.9	3.3
Rutland	21,661	20,906	755	3.5	3.4	3.7
Springfield	10,904	10,543	361	3.3	3.2	3.1
St. Johnsbury	13,912	13,427	485	3.5	3.0	3.8
White River Junction	20,521	20,088	433	2.1	2.0	2.3
Woodstock	3,849	3,712	137	3.6	4.2	4.0

¹The area names above are common language titles; for official names of areas including encompassing cities and towns please refer to the Vermont Labor Market Area map (<http://www.vtlni.info/lmadef2015.pdf>).

²Rate is estimate for number of unemployed divided by total labor force, expressed as a percent.

Source: Local Area Unemployment Statistics Program (LAUS) produced by the Vermont Department of Labor (www.vtlni.info/labforce.cfm) in cooperation with the U.S. Bureau of Labor Statistics (www.bls.gov/lau).

Table 3. Vermont Nonfarm Payroll Employment, seasonally adjusted (thousands)

NAICS Industry	Jun-18	May-18	Jun-17	Change From:		% Change From:	
	Prelim	Revised	Revised	May-18	Jun-17	May-18	Jun-17
Statewide, Total Nonfarm	315.8	314.9	315.4	0.9	0.4	0.3	0.1
Total Private	260.1	259.6	259.7	0.5	0.4	0.2	0.2
Mining, Logging and Construction	16.1	16.2	15.9	-0.1	0.2	-0.6	1.3
Mining & Logging	0.8	0.8	0.8	0.0	0.0	0.0	0.0
Construction	15.3	15.4	15.1	-0.1	0.2	-0.6	1.3
Manufacturing	29.2	29.0	29.5	0.2	-0.3	0.7	-1.0
Durable Goods	18.2	18.1	18.2	0.1	0.0	0.6	0.0
Non-Durable Goods	11.0	10.9	11.3	0.1	-0.3	0.9	-2.7
Trade, Transportation and Utilities	54.6	55.1	55.3	-0.5	-0.7	-0.9	-1.3
Wholesale Trade	9.2	9.3	9.3	-0.1	-0.1	-1.1	-1.1
Retail Trade	37.1	37.4	38.0	-0.3	-0.9	-0.8	-2.4
Trans., Warehousing & Utilities	8.3	8.4	8.0	-0.1	0.3	-1.2	3.8
Information ¹	4.4	4.4	4.6	0.0	-0.2	0.0	-4.3
Financial Activities	12.7	12.4	12.1	0.3	0.6	2.4	5.0
Finance & Insurance	9.5	9.3	9.1	0.2	0.4	2.2	4.4
Real Estate, Rental & Leasing	3.2	3.1	3.0	0.1	0.2	3.2	6.7
Professional and Business Services	29.0	28.5	28.6	0.5	0.4	1.8	1.4
Professional & Technical Services	14.7	14.4	14.6	0.3	0.1	2.1	0.7
Administrative & Waste Services	12.1	12.1	11.9	0.0	0.2	0.0	1.7
Education and Health Services	66.3	66.5	66.0	-0.2	0.3	-0.3	0.5
Private Educational Services	13.4	13.6	13.4	-0.2	0.0	-1.5	0.0
Health Care & Social Assistance	52.9	52.9	52.6	0.0	0.3	0.0	0.6
Leisure and Hospitality	37.6	37.5	37.5	0.1	0.1	0.3	0.3
Arts, Entertainment & Recreation	5.2	5.1	4.4	0.1	0.8	2.0	18.2
Accommodation & Food Services	32.4	32.4	33.1	0.0	-0.7	0.0	-2.1
Other Services	10.2	10.0	10.2	0.2	0.0	2.0	0.0
Government	55.7	55.3	55.7	0.4	0.0	0.7	0.0
Federal	7.0	7.0	6.9	0.0	0.1	0.0	1.4
State	18.9	18.5	19.0	0.4	-0.1	2.2	-0.5
Local	29.8	29.8	29.8	0.0	0.0	0.0	0.0
Burlington-S. Burlington Metro (NECTA)	124.5	124.5	125.6	0.0	-1.1	0.0	-0.9
Total Nonfarm	124.5	124.5	125.6	0.0	-1.1	0.0	-0.9

¹This is a new seasonally adjusted series as of January 2018.

With the release of January 2018 data on March 12, 2018, the Current Employment Statistics (CES) State and Area program will convert to concurrent seasonal adjustment. <https://www.bls.gov/sae/saeconcurrent.htm>

Source: Current Employment Statistics Program (CES) produced by the Economic and Labor Market Information Division, Vermont Department of Labor (www.vtلمي.info/ces.cfm) in cooperation with the U.S. Bureau of Labor Statistics (www.bls.gov/sae).

Estimates are preliminary and subject to revision. See Annual Summary for details.

Table 4. Vermont Nonfarm Payroll Employment, not seasonally adjusted

NAICS Industry	Jun-18	May-18	Jun-17	Change From:		% Change From:	
	Prelim	Revised	Revised	May-18	Jun-17	May-18	Jun-17
TOTAL NONFARM	316,600	312,400	317,000	4,200	-400	1.3	-0.1
TOTAL PRIVATE	261,900	255,800	262,200	6,100	-300	2.4	-0.1
GOODS-PRODUCING	46,500	45,500	47,000	1,000	-500	2.2	-1.1
MINING, LOGGING AND CONSTRUCTION	17,100	16,500	17,200	600	-100	3.6	-0.6
Mining & Logging	800	800	800	0	0	0.0	0.0
Construction	16,300	15,700	16,400	600	-100	3.8	-0.6
MANUFACTURING	29,400	29,000	29,800	400	-400	1.4	-1.3
Durable Goods	18,300	18,200	18,400	100	-100	0.5	-0.5
Non-Durable Goods	11,100	10,800	11,400	300	-300	2.8	-2.6
Food Mfg.	5,400	5,300	5,300	100	100	1.9	1.9
SERVICE-PROVIDING	270,100	266,900	270,000	3,200	100	1.2	0.0
TRADE, TRANSPORTATION AND UTILITIES	55,200	54,900	55,800	300	-600	0.5	-1.1
Wholesale Trade	9,300	9,300	9,400	0	-100	0.0	-1.1
Retail Trade	37,600	37,300	38,300	300	-700	0.8	-1.8
Food & Beverage Stores	10,000	9,700	10,100	300	-100	3.1	-1.0
General Merchandise Stores	3,300	3,300	3,400	0	-100	0.0	-2.9
Transportation, Warehousing & Utilities	8,300	8,300	8,100	0	200	0.0	2.5
Transportation & Warehousing	7,100	7,100	6,800	0	300	0.0	4.4
Utilities	1,200	1,200	1,300	0	-100	0.0	-7.7
INFORMATION	4,400	4,400	4,600	0	-200	0.0	-4.3
FINANCIAL ACTIVITIES	12,800	12,400	12,200	400	600	3.2	4.9
Finance & Insurance	9,500	9,300	9,100	200	400	2.2	4.4
Real Estate, Rental & Leasing	3,300	3,100	3,100	200	200	6.5	6.5
PROFESSIONAL AND BUSINESS SERVICES	30,000	28,800	29,600	1,200	400	4.2	1.4
Professional & Technical Services	14,900	14,400	14,700	500	200	3.5	1.4
Administrative & Waste Services	12,800	12,500	12,800	300	0	2.4	0.0
EDUCATION AND HEALTH SERVICES	65,700	66,400	65,400	-700	300	-1.1	0.5
Educational Services	12,600	13,500	12,500	-900	100	-6.7	0.8
Colleges and Universities	7,700	8,500	7,700	-800	0	-9.4	0.0
Health Care & Social Assistance	53,100	52,900	52,900	200	200	0.4	0.4
Ambulatory Health Care Services	17,700	17,700	17,500	0	200	0.0	1.1
Hospitals	14,300	14,200	14,400	100	-100	0.7	-0.7
Nursing & Residential Care Facilities	7,400	7,400	7,500	0	-100	0.0	-1.3
Social Assistance	13,700	13,600	13,500	100	200	0.7	1.5
LEISURE AND HOSPITALITY	37,000	33,400	37,300	3,600	-300	10.8	-0.8
Arts, Entertainment & Recreation	5,900	5,000	5,100	900	800	18.0	15.7
Accommodation & Food Services	31,100	28,400	32,200	2,700	-1,100	9.5	-3.4
Accommodation	9,900	8,100	11,200	1,800	-1,300	22.2	-11.6
Hotels & Motels	8,100	6,900	9,800	1,200	-1,700	17.4	-17.3
Food Services & Drinking Places	21,200	20,300	21,000	900	200	4.4	1.0
OTHER SERVICES	10,300	10,000	10,300	300	0	3.0	0.0
GOVERNMENT	54,700	56,600	54,800	-1,900	-100	-3.4	-0.2
Federal Government	7,000	7,000	7,000	0	0	0.0	0.0
State Government Education	7,000	7,900	7,300	-900	-300	-11.4	-4.1
Other State Government	10,200	9,900	10,000	300	200	3.0	2.0
Local Government Education	22,300	24,100	22,400	-1,800	-100	-7.5	-0.4
Other Local Government	8,200	7,700	8,100	500	100	6.5	1.2

Source: Current Employment Statistics Program (CES) produced by the Economic and Labor Market Information Division, Vermont Department of Labor (www.vtلمي.info/ces.cfm) in cooperation with the U.S. Bureau of Labor Statistics (www.bls.gov/sae).

Estimates are preliminary and subject to revision. See Annual Summary for details.